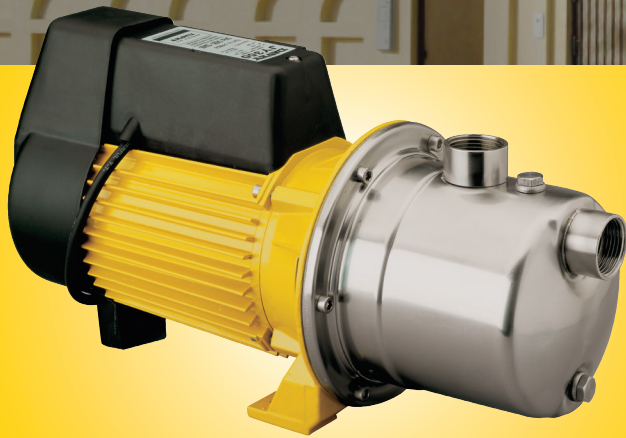


# JY Series



Model Numbers:  
JY350, JY450, JY750



## ECONOMICAL, COMPACT - SINGLE STAGE JET ASSISTED CENTRIFUGAL PUMP

### APPLICATION

Ideal for pumping clean, non-volatile liquids without fibres or solids in such applications as elevated tank filling, domestic water supply and water transfer.

### FEATURES & BENEFITS

- **Single stage jet assisted centrifugal pump** provides the versatility of high flow rates with strong pressure
- **Less moving parts** for increased dependability
- **Self priming** for easier installation
- **Corrosion resistant and stainless steel pump components** for longer life when pumping a variety of water qualities and reduced friction within the casing and impellers
- **Permanent split capacitor** for dependable and frequent starting
- **In-built thermal overload** for long motor life and protection against motor damage due to jamming
- **High quality sealed bearings** for longer life
- **Fitted with a power lead** for ease of connection to power supply
- **Resists ingress of dust and dirt** - IP55 rated
- **Suction and discharge are close** for easier installation
- **Quality components throughout** for long life and easier maintenance
- **Every pump is performance and pressure tested in the factory** to ensure quality and reliability

# Home Pressure Systems

## OPERATING LIMITS

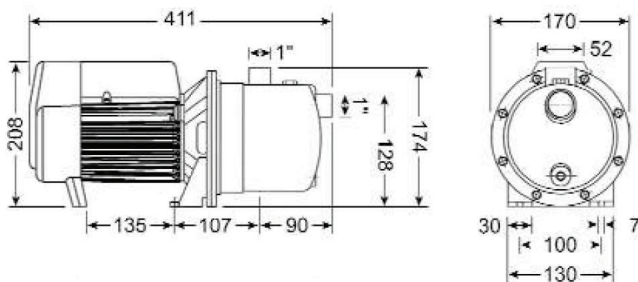
Model	JY350	JY450	JY750
Flow capacities to	37 lpm	43 lpm	67 lpm
Maximum total head	37m	46m	31m
Maximum liquid temperature	45°C		
Maximum ambient temperature	55°C		
Maximum suction lift	7m		
Maximum casing pressure	600kPa		
Maximum incoming (suction) pressure	140kPa		
Inlet size	1" BSP(F)		
Outlet size	1" BSP(F)		

## ELECTRICAL DATA

Model	JY350	JY450	JY750
Nominal RPM	2900		
Volts / hertz / phase	220-240 / 50 / 1		
IP rating / insulation	IP55 / Class F		
Amps	2.5	3.5	
kW (P <sub>1</sub> )/(P <sub>2</sub> )	0.52 / 0.37	0.83 / 0.60	
Nominal hp	0.7	1	

## DIMENSIONS

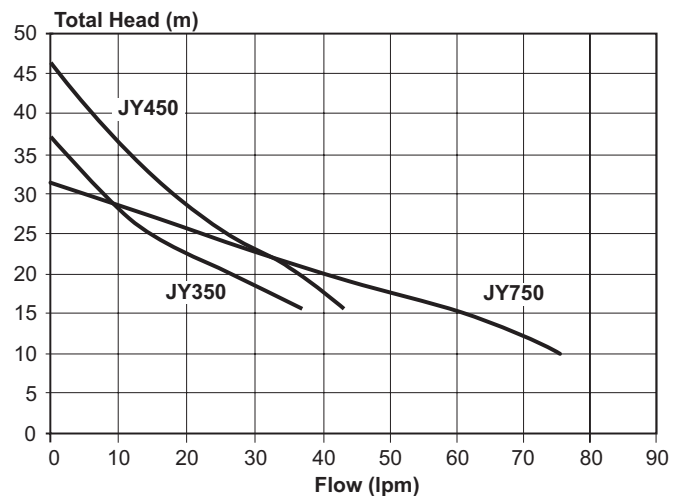
Model	Weight (kg)
JY350	6
JY450	8
JY750	8



## MATERIALS OF CONSTRUCTION

PART	MATERIAL
Impeller	304 stainless steel
Pump casing	304 stainless steel
Pump shaft	316 stainless steel
Seal ring (stationary)	Ceramic
Seal ring (rotating)	Carbon
Seal ring elastomer	Nitrile rubber
Seal spring	304 stainless steel
O-ring	Nitrile rubber
Jet / venturi / cover plate	Glass filled thermoplastic
Motor shell	Aluminium
Motor shell finish	Polyester

## HYDRAULIC PERFORMANCE



## INSTALLATION AND PRIMING

- On installations with suction lifts, a good quality foot valve should be fitted to avoid loss of prime.
- The system is primed by filling with water. Ensure all suction pipes are air tight.